

Customer :

customer

Customer part :

customer part

Comment :

Comment

S1=0.04

S2=0.3

Tmax=509

Tp S2=548.0

PI=0.11

HI=26

Sample =10459.6

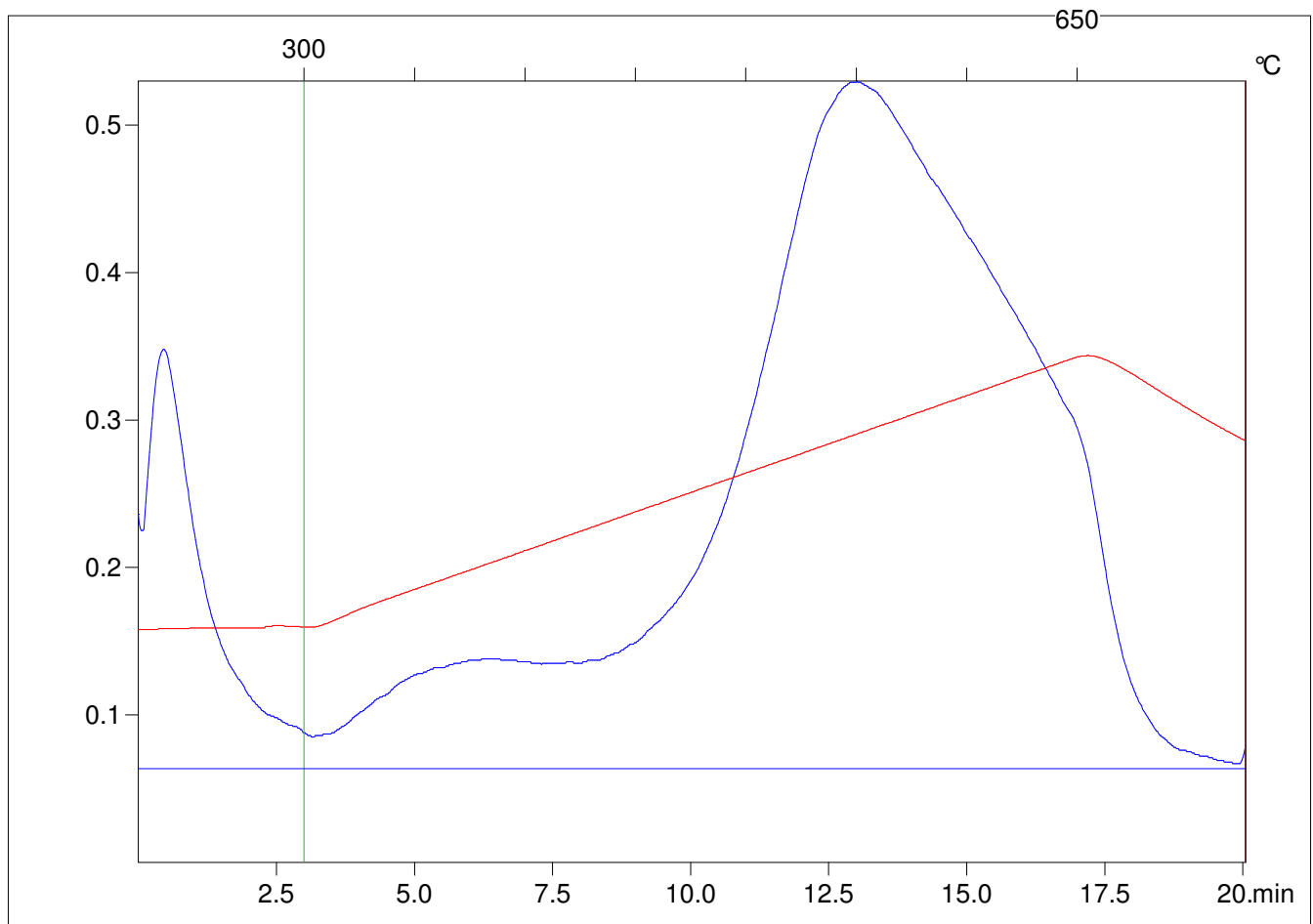
Method =Bulk Rock

Cycle=Basic

KFID(10*9)=1167

Qty =69.9

TOC=1.16



C:\VINC\PK141021\PK006.R00 : FID pyrolysis graphic

State

Pyro Status

Oxi Status